

A

B

C

D

E

A

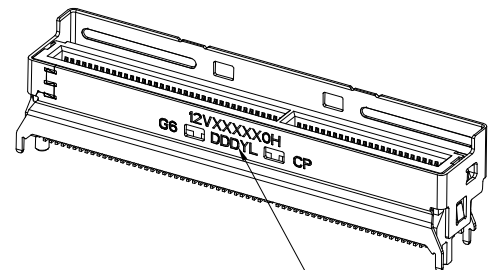
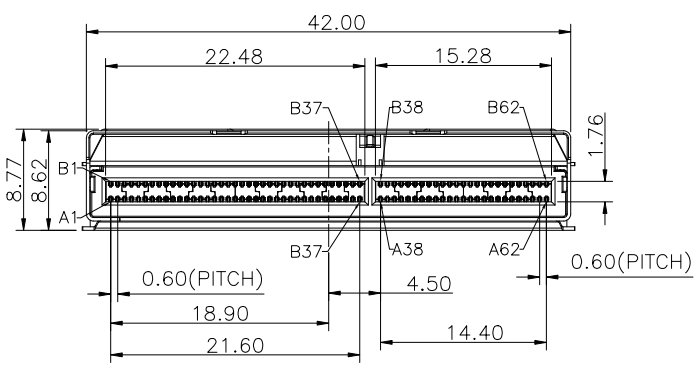
B

C

D

E

REV.	DESCRIPTION	MDF'D	APP'D	DATE
A01	INITIAL DESIGN	Miles	James	11/30/2023



LASER ENGRAVING  
(SEE NOTE)

12 V 3 X X X X 0 H

PRODUCT CODE  
12: MCIO FOR PCIe 6.0 SERIES

STYLE  
V: VERTICAL SMT

CHANNEL/PIN Q'TY  
3: 124POS (16X+SIDE BAND)  
B: 124POS (20X)

PLATING (CONTACT/SOLDER TAIL)  
2=15u" Au+MATT TIN  
3=30u" Au+MATT TIN

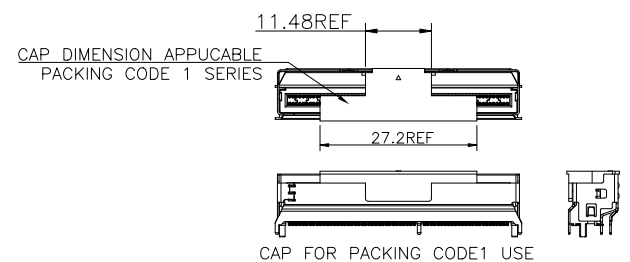
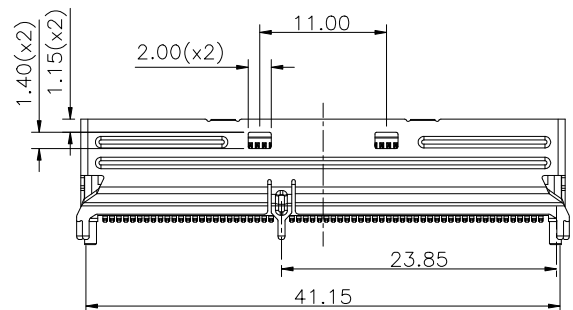
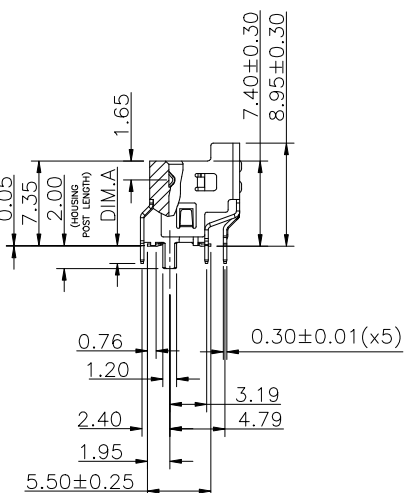
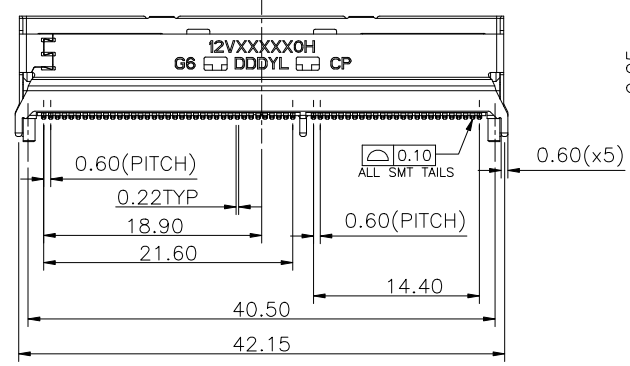
COMPLIANT CODE  
H: RoHS + HALOGEN FREE

VARIATION CODE  
0: STANDARD

PACKING CODE  
1: TAPE & REEL (WITH CAP)  
2: TAPE & REEL (WITHOUT CAP)

RESERVE CODE  
X=RESERVE

SHELL PIN LENGTH OPTION (DIMA)  
1=1.50mm  
2=2.20mm  
3=3.00mm  
4=4.20mm



NOTE:  
1.MATERIAL:  
HOUSING/CAP:(HF)HI-TEMP THERMOPLASTIC UL 94V-0 BLACK  
CONTACT: COPPER ALLOY  
SHELL:STAINLESS STEEL  
GROUND BAR:PHOSPHOR BRONZE  
2.FINISH:  
CONTACT:CONTACT AREA: REFER P/N SYSTEM  
SOLDER TAIL:MATTE TIN 100u~200u"  
50u" MIN NICKEL UNDERPLATE ALL OVER  
SHELL/GROUND BAR::60~120u" NICKEL, SEAL,UNDERPLATE ALL OVER  
3.LASER ENGRAVING: PART NUMBER , DATE CODE AND CHANNEL/PIN Q'TY.  
12VXXX0H=P/N (CHECK P/N SYSTEM)  
DDDYL=MANUFACTURE DATE CODE  
DDD: MANUFACTURE DAY OF THE YEAR  
Y:=LAST DIGITS OF YEAR  
L:=ASSEMBLY LINE  
G6:=FOR PCIe 6.0 APPLICATION  
CP:=CHANNEL/PIN Q'TY  
16X:=16X+SIDE BAND  
20X:=20X

THE INFORMATION CONTAINED IN THIS DRAWING IS THE SOLE PROPERTY OF ZHEJIANG ZHAOLONG INTERCONNECT TECHNOLOGY CO., LTD. AND SHOULD NOT BE USED WITHOUT WRITTEN PERMISSION.						
GENERAL TOLERANCES: (UNLESS SPECIFIED) Unit : mm	PROJECTION 		 ZHEJIANG ZHAOLONG INTERCONNECT TECHNOLOGY CO., LTD. TITLE MCIO 16X OR 20X 124POS VERTICAL CONNECTOR FOR PCIe 6.0			
	0. = ±.30	APPROVED				
0.0 = ±.25	James 11/30/2023	CHECKED	PART No.	SCALE	SIZE	DOC TYPE
0.00 = ±.15	Brown 11/30/2023					
0.000 = ±.10	DRAWN	Miles 11/30/2023	1:1	A4	C	REVISION
0" = ± 3'						
0.0" = ± 2'						SHEET No.
						1 OF 5

1

2

3

4

5

6

7

16X SHORTING LEG:  
A1,A4,A7,A13,A16,A19,A22,A25,A31,A34,A37,  
A38,A41,A44,A47,A50,A53,A56,A59,A62  
B1,B4,B7,AB13,B16,B19,B22,B25,B31,B34,B37,  
B38,B41,B44,B47,B50,B53,B56,B59,B62

20X SHORTING LEG:  
A1,A4,A7,A10,A13,A16,A19,A22,A25,A28,A31,A34,A37,  
A38,A41,A44,A47,A50,A53,A56,A59,A62  
B1,B4,B7,B10,B13,B16,B19,B22,B25,B28,B31,B34,B37,  
B38,B41,B44,B47,B50,B53,B56,B59,B62

SHORTING LEG

SIDE A	PIN #	SIDE B
GROUND	1	GROUND
SIGNAL	2	SIGNAL
SIGNAL	3	SIGNAL
GROUND	4	GROUND
SIGNAL	5	SIGNAL
SIGNAL	6	SIGNAL
GROUND	7	GROUND
SIGNAL	8	SIGNAL
SIGNAL	9	SIGNAL
GROUND	10	GROUND
SIGNAL	11	SIGNAL
SIGNAL	12	SIGNAL
GROUND	13	GROUND
SIGNAL	14	SIGNAL
SIGNAL	15	SIGNAL
GROUND	16	GROUND
SIGNAL	17	SIGNAL
SIGNAL	18	SIGNAL
GROUND	19	GROUND
SIGNAL	20	SIGNAL
SIGNAL	21	SIGNAL
GROUND	22	GROUND
SIGNAL	23	SIGNAL
SIGNAL	24	SIGNAL
GROUND	25	GROUND
SIGNAL	26	SIGNAL
SIGNAL	27	SIGNAL
GROUND	28	GROUND
SIGNAL	29	SIGNAL
SIGNAL	30	SIGNAL
GROUND	31	GROUND
SIGNAL	32	SIGNAL
SIGNAL	33	SIGNAL
GROUND	34	GROUND
SIGNAL	35	SIGNAL
SIGNAL	36	SIGNAL
GROUND	37	GROUND
GROUND	38	GROUND
SIGNAL	39	SIGNAL
SIGNAL	40	SIGNAL
GROUND	41	GROUND
SIGNAL	42	SIGNAL
SIGNAL	43	SIGNAL
GROUND	44	GROUND
SIGNAL	45	SIGNAL
SIGNAL	46	SIGNAL
GROUND	47	GROUND
SIGNAL	48	SIGNAL
SIGNAL	49	SIGNAL
GROUND	50	GROUND
SIGNAL	51	SIGNAL
SIGNAL	52	SIGNAL
GROUND	53	GROUND
SIGNAL	54	SIGNAL
SIGNAL	55	SIGNAL
GROUND	56	GROUND
SIGNAL	57	SIGNAL
SIGNAL	58	SIGNAL
GROUND	59	GROUND
SIGNAL	60	SIGNAL
SIGNAL	61	SIGNAL
GROUND	62	GROUND

SHORTING LEG

SIDE A	PIN #	SIDE B
GROUND	1	GROUND
SIGNAL	2	SIGNAL
SIGNAL	3	SIGNAL
GROUND	4	GROUND
SIGNAL	5	SIGNAL
SIGNAL	6	SIGNAL
GROUND	7	GROUND
SIGNAL	8	SIGNAL
SIGNAL	9	SIGNAL
GROUND	10	GROUND
SIGNAL	11	SIGNAL
SIGNAL	12	SIGNAL
GROUND	13	GROUND
SIGNAL	14	SIGNAL
SIGNAL	15	SIGNAL
GROUND	16	GROUND
SIGNAL	17	SIGNAL
SIGNAL	18	SIGNAL
GROUND	19	GROUND
SIGNAL	20	SIGNAL
SIGNAL	21	SIGNAL
GROUND	22	GROUND
SIGNAL	23	SIGNAL
SIGNAL	24	SIGNAL
GROUND	25	GROUND
SIGNAL	26	SIGNAL
SIGNAL	27	SIGNAL
GROUND	28	GROUND
SIGNAL	29	SIGNAL
SIGNAL	30	SIGNAL
GROUND	31	GROUND
SIGNAL	32	SIGNAL
SIGNAL	33	SIGNAL
GROUND	34	GROUND
SIGNAL	35	SIGNAL
SIGNAL	36	SIGNAL
GROUND	37	GROUND
GROUND	38	GROUND
SIGNAL	39	SIGNAL
SIGNAL	40	SIGNAL
GROUND	41	GROUND
SIGNAL	42	SIGNAL
SIGNAL	43	SIGNAL
GROUND	44	GROUND
SIGNAL	45	SIGNAL
SIGNAL	46	SIGNAL
GROUND	47	GROUND
SIGNAL	48	SIGNAL
SIGNAL	49	SIGNAL
GROUND	50	GROUND
SIGNAL	51	SIGNAL
SIGNAL	52	SIGNAL
GROUND	53	GROUND
SIGNAL	54	SIGNAL
SIGNAL	55	SIGNAL
GROUND	56	GROUND
SIGNAL	57	SIGNAL
SIGNAL	58	SIGNAL
GROUND	59	GROUND
SIGNAL	60	SIGNAL
SIGNAL	61	SIGNAL
GROUND	62	GROUND

REV.	DESCRIPTION	MDF'D	APP'D	DATE
A01	INITIAL DESIGN	Miles	James	11/30/2023

THE INFORMATION CONTAINED IN THIS DRAWING IS THE SOLE PROPERTY OF ZHEJIANG ZHAOLONG INTERCONNECT TECHNOLOGY CO., LTD. AND SHOULD NOT BE USED WITHOUT WRITTEN PERMISSION.

GENERAL TOLERANCES:  
(UNLESS SPECIFIED)

Unit : mm

PROJECTION

0. = ±.30  
0.0 = ±.25  
0.00 = ±.15  
0.000 = ±.10  
0" = ± 3'  
0.0" = ± 2'

APPROVED

James 11/30/2023

CHECKED

Brown 11/30/2023

DRAWN

Miles 11/30/2023

ZHEJIANG ZHAOLONG INTERCONNECT TECHNOLOGY CO., LTD.

TITLE

MCIO 16X OR 20X 124POS VERTICAL CONNECTOR FOR PCIe 6.0

PART No.

12V3XXX0H

SCALE

1:1

SIZE

A4

DOC TYPE

C

REVISION

A01

SHEET No.

2 OF 5

1

2

3

4

5

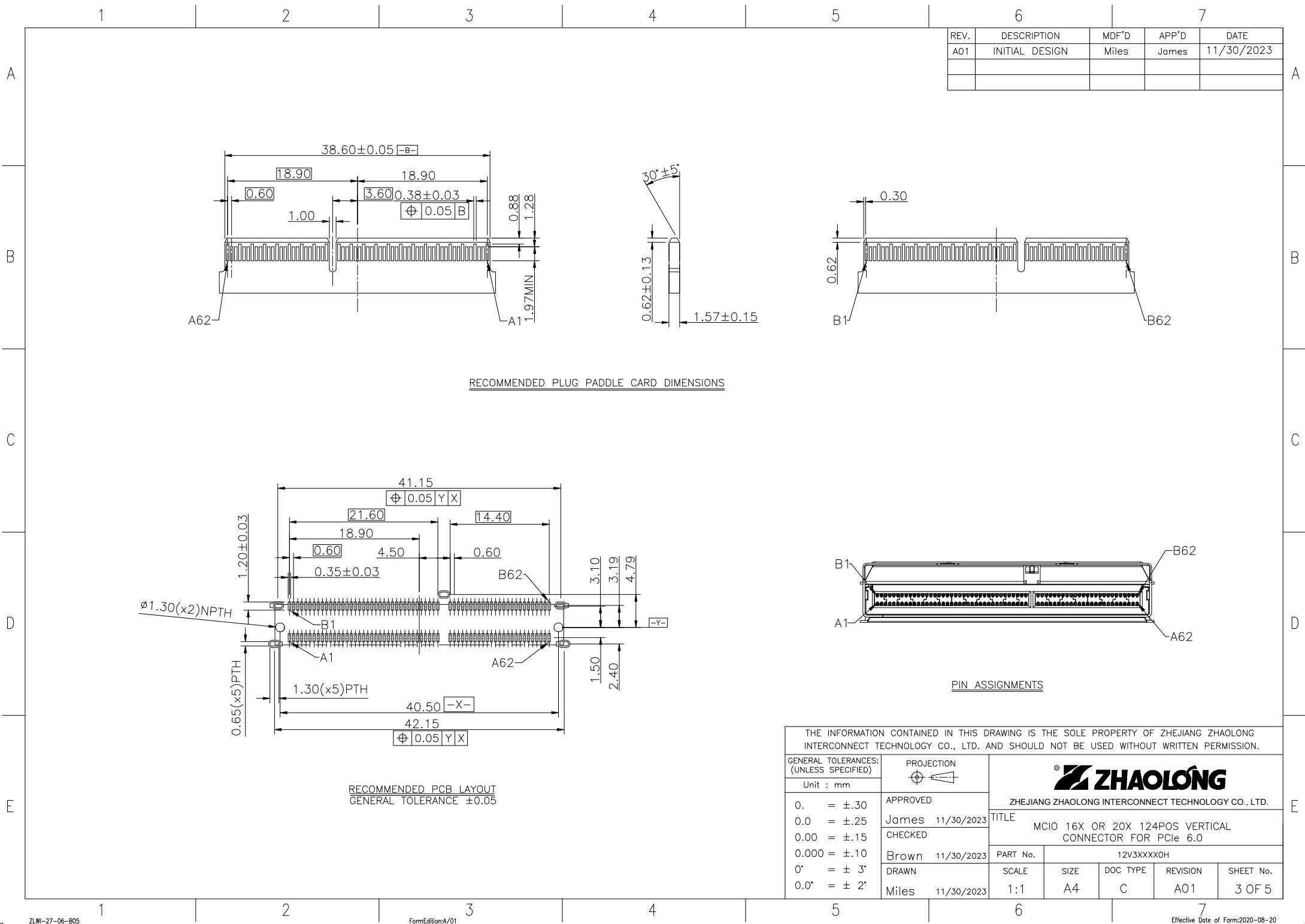
6

7

ZLW-27-06-B05

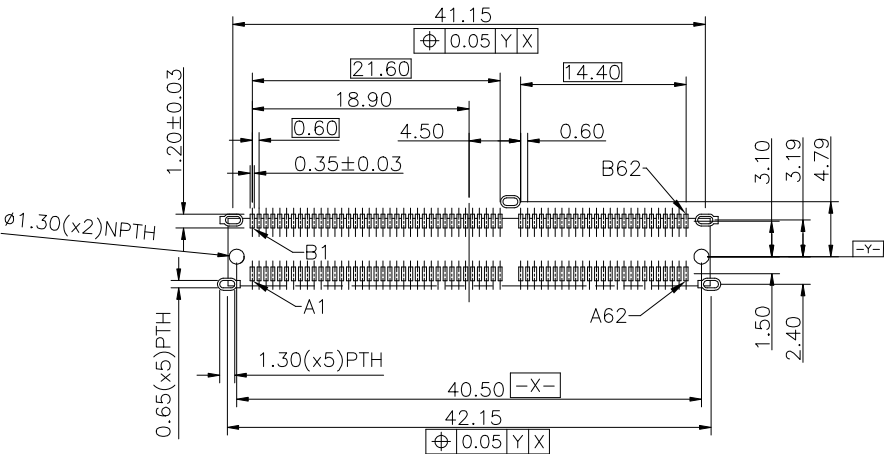
FormEditionA/01

Effective Date of Form:2020-08-20

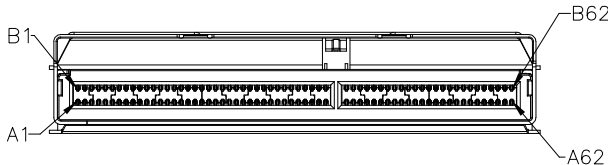


REV.	DESCRIPTION	MDF'D	APP'D	DATE
A01	INITIAL DESIGN	Miles	James	11/30/2023



RECOMMENDED PLUG PADDLE CARD DIMENSIONS

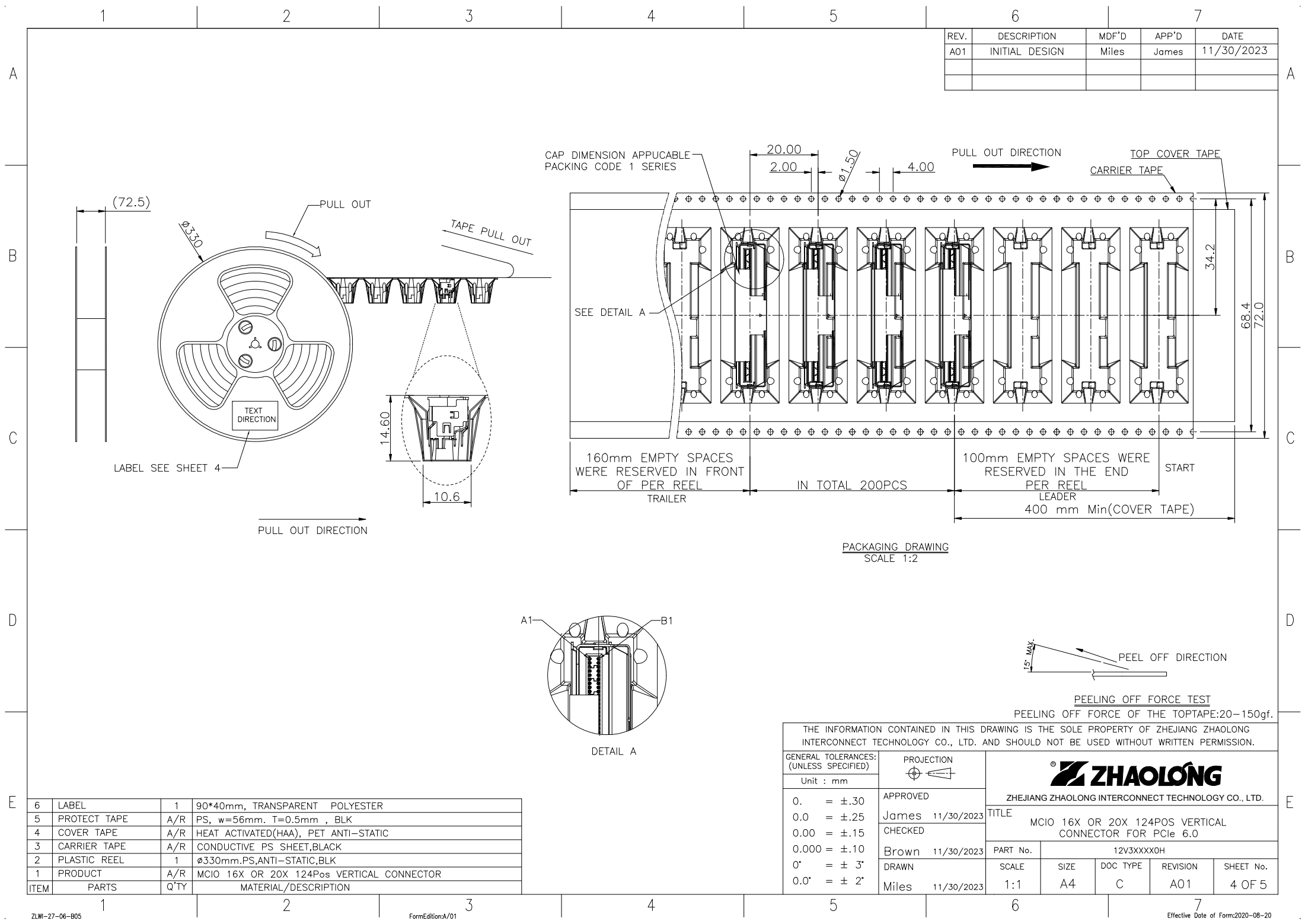


RECOMMENDED PCB LAYOUT  
GENERAL TOLERANCE ±0.05



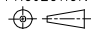

PIN ASSIGNMENTS

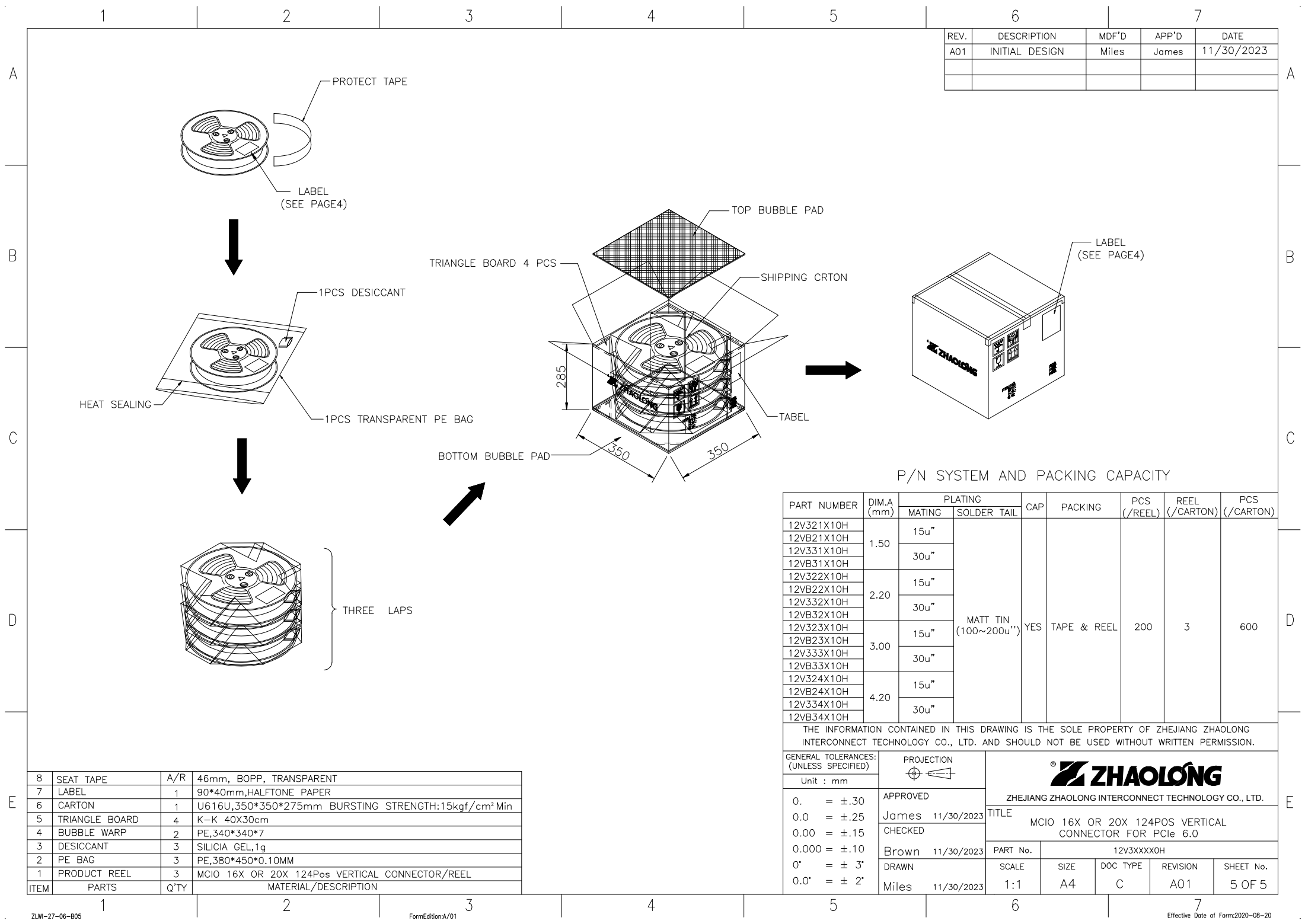
THE INFORMATION CONTAINED IN THIS DRAWING IS THE SOLE PROPERTY OF ZHEJIANG ZHAOLONG INTERCONNECT TECHNOLOGY CO., LTD. AND SHOULD NOT BE USED WITHOUT WRITTEN PERMISSION.							
GENERAL TOLERANCES: (UNLESS SPECIFIED)  Unit : mm		PROJECTION 	 ZHEJIANG ZHAOLONG INTERCONNECT TECHNOLOGY CO., LTD.				
0. = ±.30		APPROVED	TITLE MCIO 16X OR 20X 124POS VERTICAL CONNECTOR FOR PCIe 6.0				
0.0 = ±.25		James 11/30/2023					
0.00 = ±.15		CHECKED	PART No. 12V3XXX0H				
0.000 = ±.10		Brown 11/30/2023					
0° = ± 3'		DRAWN	SCALE	SIZE	DOC TYPE	REVISION	SHEET No.
0.0° = ± 2'		Miles 11/30/2023	1:1	A4	C	A01	3 OF 5



REV.	DESCRIPTION	MDF'D	APP'D	DATE
A01	INITIAL DESIGN	Miles	James	11/30/2023

6	LABEL	1	90*40mm, TRANSPARENT POLYESTER
5	PROTECT TAPE	A/R	PS, w=56mm. T=0.5mm , BLK
4	COVER TAPE	A/R	HEAT ACTIVATED(HAA), PET ANTI-STATIC
3	CARRIER TAPE	A/R	CONDUCTIVE PS SHEET,BLK
2	PLASTIC REEL	1	ø330mm.PS,ANTI-STATIC,BLK
1	PRODUCT	A/R	MCIO 16X OR 20X 124Pos VERTICAL CONNECTOR
ITEM	PARTS	Q'TY	MATERIAL/DESCRIPTION

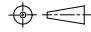

THE INFORMATION CONTAINED IN THIS DRAWING IS THE SOLE PROPERTY OF ZHEJIANG ZHAOLONG INTERCONNECT TECHNOLOGY CO., LTD. AND SHOULD NOT BE USED WITHOUT WRITTEN PERMISSION.									
GENERAL TOLERANCES: (UNLESS SPECIFIED)  Unit : mm			<div></div> <div>ZHEJIANG ZHAOLONG INTERCONNECT TECHNOLOGY CO., LTD.</div>						
0. = ±.30		APPROVED	TITLE MCIO 16X OR 20X 124POS VERTICAL CONNECTOR FOR PCIe 6.0						
0.0 = ±.25		James 11/30/2023							
0.00 = ±.15		CHECKED	PART No. 12V3XXX0H						
0.000 = ±.10		Brown 11/30/2023							
0" = ± 3"		DRAWN	SCALE	SIZE	DOC TYPE	REVISION	SHEET No.		
0.0" = ± 2"		Miles 11/30/2023	1:1	A4	C	A01	4 OF 5		



REV.	DESCRIPTION	MDF'D	APP'D	DATE
A01	INITIAL DESIGN	Miles	James	11/30/2023

8	SEAT TAPE	A/R	46mm, BOPP, TRANSPARENT
7	LABEL	1	90*40mm,HALFTONE PAPER
6	CARTON	1	U616U,350*350*275mm BURSTING STRENGTH:15kgf/cm² Min
5	TRIANGLE BOARD	4	K-K 40X30cm
4	BUBBLE WARP	2	PE,340*340*7
3	DESICCANT	3	SILICIA GEL,1g
2	PE BAG	3	PE,380*450*0.10MM
1	PRODUCT REEL	3	MCIO 16X OR 20X 124Pos VERTICAL CONNECTOR/REEL
ITEM	PARTS	Q'TY	MATERIAL/DESCRIPTION

P/N SYSTEM AND PACKING CAPACITY								
PART NUMBER	DIM.A (mm)	PLATING		CAP	PACKING	PCS (/REEL)	REEL (/CARTON)	PCS (/CARTON)
		MATING	SOLDER TAIL					
12V321X10H	1.50	15u"	MATT TIN (100~200u")	YES	TAPE & REEL	200	3	600
12VB21X10H		30u"						
12V331X10H		30u"						
12VB31X10H	2.20	15u"						
12V322X10H		30u"						
12VB22X10H		30u"						
12V332X10H	3.00	15u"						
12VB32X10H		30u"						
12V323X10H		30u"						
12VB23X10H	4.20	15u"						
12V333X10H		30u"						
12VB33X10H		30u"						
12V324X10H	4.20	15u"						
12VB24X10H		30u"						
12V334X10H		30u"						
12VB34X10H								

THE INFORMATION CONTAINED IN THIS DRAWING IS THE SOLE PROPERTY OF ZHEJIANG ZHAOLONG INTERCONNECT TECHNOLOGY CO., LTD. AND SHOULD NOT BE USED WITHOUT WRITTEN PERMISSION.									
GENERAL TOLERANCES: (UNLESS SPECIFIED)  Unit : mm			<div></div> <div>ZHEJIANG ZHAOLONG INTERCONNECT TECHNOLOGY CO., LTD.</div>						
0. = ±.30		APPROVED	TITLE MCIO 16X OR 20X 124POS VERTICAL CONNECTOR FOR PCIe 6.0						
0.0 = ±.25		James 11/30/2023							
0.00 = ±.15		CHECKED	PART No. 12V3XXX0H						
0.000 = ±.10		Brown 11/30/2023							
0° = ± 3°		DRAWN	SCALE	SIZE	DOC TYPE	REVISION	SHEET No.		
0.0° = ± 2°		Miles 11/30/2023	1:1	A4	C	A01	5 OF 5		